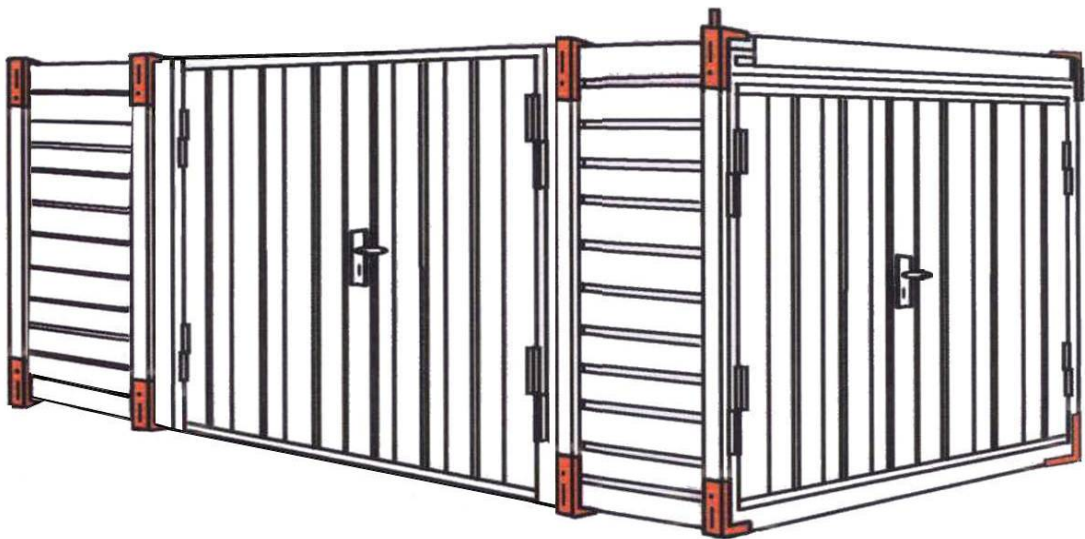


USER MANUAL  
AND  
SPARE PARTS CATALOGUE

# CARPORT KOVOBEL



EDITION: 31.10.2005

PRODUCER



**KOVOBEL**, výrobní družstvo  
Cihlářská 503  
344 01 Domažlice  
CZECH REPUBLIC

Telephone: +420 379 724 441

Fax: +420 379 722 552

E-mail: [kovobel@kovobel.cz](mailto:kovobel@kovobel.cz)  
Internet: [www.kovobel.cz](http://www.kovobel.cz)

**KOVOBEL CARPORT**

---

Contents:	1) Usage and description
	2) Work safety
	3) Technical informations
	4) Working introduction
	5) Operation
	6) Maintenance
	7) Building requirements
	8) Assembly
	9) Dismantle to transport position
	10) Guarantee, service and spare parts
	11) Figures
	12) Spare parts catalogue

**KOVOBEL CARPORT****1) USAGE AND DESCRIPTION****1.1 Basic parts of container**

Carport Kovobel is delivered in two length – 5 m and 6 m and consists of following parts:

- a) **Floors** are produced in two types:
  - wooden planks 35 mm thick bolted to galvanized steel supports
  - plastic floor 12 mm thick (polypropylen bearing structure with covering of polyester resin) bolted to supports and fork guides of galvanized steel 2 mm thickOn sides of the floor are by both types mounted lengthwise profiles made of galvanized steel 1 mm thick.
- b) **Sides** are made of profiled galvanized steel 0,75 mm thick. Profiled steel, is riveted to another set of steel supports, which are made out of galvanized steel 2 mm thick.
- c) **Back wall** is made out of profiled galvanized steel 0,75 mm thickness. Profiled steel is riveted to two steel supports (top and bottom), which are made out of galvanized steel 2 mm thick.
- d) **Roof** is made out of profiled galvanized steel 0,75 mm thick. This profiled steel roofing is riveted to steel supports, which are made out of galvanized steel 2 mm thick. Side supports of the roof serve as guttering.
- e) **Door** is double winged. Both wings are made out of 0,75 mm profiled galvanized steel. These are riveted to steel supports of the door. Frames are made out of 1 mm galvanized steel. The door is secured by a pull draw lever, door handle, lock (FAB), and prevention against buckling. The wings of the door are attached to the frame in hinges. The frame is constructed of 2 mm galvanized steel supports.
- f) **Corner angles** are made out of 3 mm steel. They are galvanized and painted. These are used to join parts of container/floor, sides, top/to transport position and for own assembly. Corner angles are provided with pegs which are used for stacking containers in transport position. Corner angles are equipped with holes, enabling the container to be suspended by crane.

**2) WORK SAFETY**

Kovobel carport complies with all safety and hygiene standards, environment and fire regulations in accordance with all regulations and respective technical standards.

- a) Kovobel carport can only be assembled and used by persons of the age of 18 or older, in physical and mental order, who are certified with assembly of carport and work safety.
- b) When assembling this unit it is necessary to line up individual parts in accordance with instruction in this manual and do proper bolting and firm tightening of all the joints.
- c) Due to very heavy parts (see paragraph 3) in this Manual), it is necessary to do the assembly with sufficient number of workers to prevent accident and injury. The number of assembly workers required is decided by customer, depending on the size of the carport, physical condition of workers, to ensure work safety.
- d) Carport can only be used for purposes designated in this Manual. If used for another purpose, the manufacturer is not liable for any damage caused.
- e) Any handling of the carport (by forklift truck or crane) can only be done by certified operator.
- f) Handling of the assembled carport is only permitted with locked door and within the weight limits see paragraph 3 of this Manual.
- g) It is prohibited to handle the carport while people are inside.
- h) In case of any damage to the carport, any handling of the carport (with crane or forklift truck), is prohibited.
- i) Carports can be stored in transport or assembly positions. By storage in assembly position the carport **must be empty**.
- j) Before dismantling the carport, all the contents of the carport must be removed, including dismounting of stop strip and ramps. Disassembly can only be done by a worker certified with all safety regulations concerning the tools used for dismantling of the carport.

## KOVOBEL CARPORT

- k) Scrapping of the dismantled carport (steel waste and wooden-plastic floor) must be done in accordance with environment regulations. The owner of the carport is responsible for it and is supposed after the end of working life of carport when the individual parts of carport are not going to be used any more.

### 3) TECHNICAL INFORMATION

#### A) SIZE I (length 5 m)

measurements	width [mm]	height [mm]	length [mm]	weight [kg]	
				wooden floor	plastic floor
Inside	2200	2200	5000	670	636
Outsider	2000	2000	4840		
transport position	2200	380	5000		

#### B) SIZE II (length 6 m)

measurements	width [mm]	height [mm]	length [mm]	weight [kg]	
				wooden floor	plastic floor
Inside	2200	2200	6000	780	680
outside	2000	2000	5840		
transport position	2200	380	6000		

Open doorway to carport, when door is open, in both types of carports is 1930 x 1930 mm.

#### WEIGHTS OF INDIVIDUAL PARTS in kg

length of container [m]	5	6
Side	108	118
Side with door	125	135
Back wall	30	30
Door	60	60
Roof	120	134
Wooden floor	224	300
Plastic floor	190	200
Corner angle	1	1

#### TRANSPORTATION

- \* forklift truck
- \* crane - for grips corner angles with holes for cables are used

#### MAXIMUM LOAD

- \* handling with crane - 1500 kg (weight limit of base/floor - 500 kg/m<sup>2</sup>)
- \* handling with forklift truck- 3000 kg (weight limit of base/floor - 500 kg/m<sup>2</sup>)

### 4) WORKING INTRODUCTION

The carport can only be used, if it has been assembled according to this manual, by trained workers, carefully, all joints firmly tightened and no damage or other deformations were found.

## KOVOBEL CARPORT

### 5) OPERATION

The carport can only be used by adults authorised and trained. The operator must have read and understood the Kovobel carport Manual. Training is the responsibility of owner/operator.

### 6) MAINTENANCE

Maintenance of the carport consists of the following activities:

- \* visual check of carport's condition (1 x a week)
- \* application of lubricator on hinges (as necessary)
- \* cleaning of drain (as necessary)

### 7) BUILDING REQUIREMENTS

Kovobel carport is positioned on level and compact or solid area. Approach road to the carport must correspond with the method it is being used for. In placing of the carport it is necessary to take into account valid regulations for fire safety.

### 8) ASSEMBLY

Kovobel carport is delivered in transport position, unless agreed otherwise.

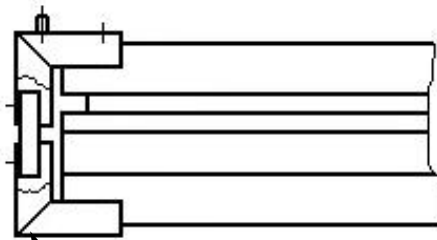
In the carport in transport position you will find a plastic bag containing screw-secured door handle, two nails, four bolts M 12 x 70, four washers  $\varnothing$  50,5 mm, four nuts M 12 and four safety nuts M 12. These parts are used for assembly of the container. There are 3 keys for the lock fixed with tape on the door. This manual is also included. It is necessary to assemble the carport on level, solid area.

Tools needed for assembly - ratchet spanner 19, open spanner 19, hammer and screwdriver

#### 8.1 SEQUENCE OF ASSEMBLY:

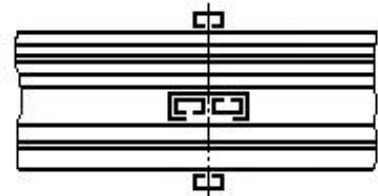
a) Dismantling the carport from transport position:

- firstly remove the top angles, secondly remove safety support I and safety support II (see picture no. 1 and 2)
- remove the individual parts of the carport (sides, roof, back wall, door) put them aside so you are left with the last one, base/floor.



(securing) safety support II

Picture no. 1.

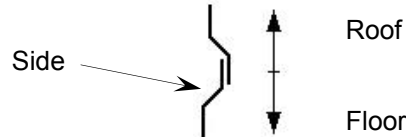


(securing) safety support I

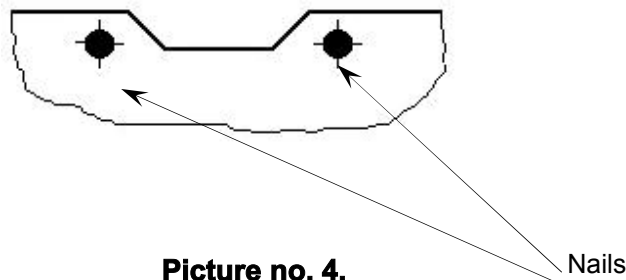
Picture no. 2.

b) Attach both sides to the base, as shown on mid cross-section-picture (see picture no. 9 and 10), and bolt them over the corner angles to the base. Pay attention on placing the side with double-wing door.

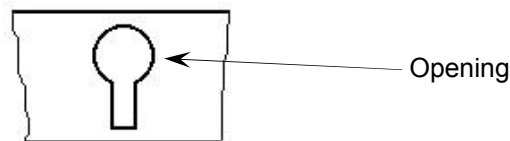
**WARNING:** The sides must be positioned so, that the joining of corrugated panels, which rung in the middle of the side corresponds to the picture 3. In the opposite case, water would come in. The sides are attached to the corner with the bolts M12 x 70, washers  $\varnothing$  50,5 mm, nuts M12 in the corresponding round holes. The door, installed in the side wall have to stay closed and fixed in this side wall during the assembly.

**KOVOBEL CARPORT****Picture no. 3.**

- c) The back wall is attached to the sides and base as you can see on the pictures no. 11 and 12. Back wall is seated from the inside of the carport.
- d) The door is attached between sides, and based same way as the back wall, as shown on pictures no. 11 and 12. Bottom part of the frame of the door is nailed down to the base with two nails. Nails are in plastic bags and their placing is shown with two openings  $\varnothing 3,8$  mm, which are in the middle of the bottom part of the frame (see picture no. 4).

**Picture no. 4.**

- e) The roof sits over the sides (see pictures no. 9 and 10) and over back wall and door (see picture no. 12). The roof is bolted to the sides through the corner angles. The side is fixed to the corner angles with bolt M 12 x 70, washer  $\varnothing 50,5$  mm, nuts M 12 and safety nuts M 12 through round holes in the side. All bolts and nuts must be fully tightened.
- f) Both door wings are supplied with plastic supports, which prevent the door from opening too wide and being damaged. On one end of the plastic support there is a stopper made of galvanized steel. Stopper should be inserted into the shaped opening, which is cut in the roof eaves (see picture no. 5). Plastic support is placed on the top part of the door. Now attach handle which is secured by set screw.

**Picture no. 5.**

## 8.2. METHOD OF FITTING THE COMPLEMENTARY EQUIPMENT AND ACCESSORIES

### 8.2.1. STOP STRIP

By Stop strip (wooden balk) is limited the exact depth of parked vehicle. It is different according to the type of vehicle. Stop strip is to be fixed to the floor with 4 pcs nails  $\varnothing 3,6 \times 60$  mm from the plastic bag.

### 8.2.2. RAMP

With the carport are delivered two ramps. On back side of the ramps are fitted two sheet strips for fixing the ramps on the door frame profile. The distance between the ramps is to be adjusted according to the wheel spacing of the parked vehicle.

## 9) HOW TO DISMANTLE TO THE TRANSPORTING POSITION

Kovobel carport can be dismantled from the assembled position to the transporting position for storage of carport or for easier and cheaper transportation. It is possible to stack the carport on the top of another one. For dismantling of carport, following parts are needed: two securing supports I, two securing supports II and four bolts M 12 x 30, which were replaced in assembly with M 12 x 70.

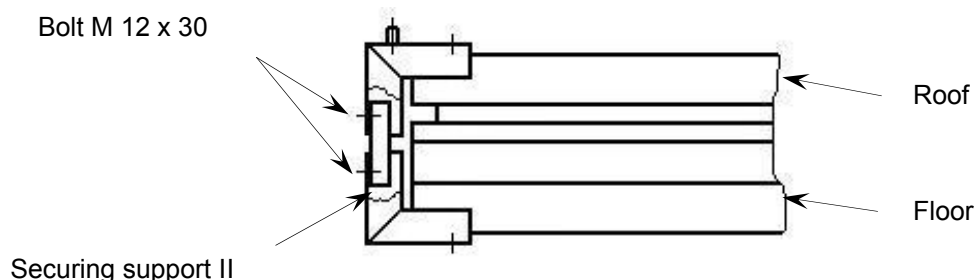
After dismantling the carport, parts (screw-secured handle, four bolts M 12 x 70, four washers  $\varnothing$  50,5 mm, four nuts M 12, four safety nuts M 12 and keys) should be saved for future assembly. For reassembly you will need two nails 3 x 30, which are not reusable.

In order to dismantle the carport, follow instructions below. This should be carried out on a firm, level surface.

Throughout dismantling take care and remove all stored material, stop strip and ramps from inside of the container.

### 9.1. INSTRUCTIONS FOR DISMANTLING OF THE CONTAINER

- a) The screw-secured door handle is removed from the door.
- b) Before removing the roof you must dismantle top corner angles. Before you unscrew the bolt M 12 x 70 which is used to secure side to corner angle, you must remove safety nuts from inside the carport. After this dismantle the bolt connection. Roof is then lifted over sides (walls) and over back wall and door (see pict. no. 9 and 11).
- c) Back wall is lifted from sides. Back wall is removed from inside of the carport. (see pict. no. 11 and 12).
- d) The front door is lifted from sides and base in the same way as back wall as shown on the pictures no.11 and 12. Bottom part of the frame is fastened with two nails in the middle of bottom part of the frame to base (see pict.no. 5), which can be removed with help of pliers.
- e) The sides have to be dismantled from corner angles. Four bolts M 12 x 70, which are used for securing sides to corner angles, are removed by undoing safety nuts from inside of the carport, after this dismantle the bolt connection. Bolts are not needed for dismantle position, but they are saved for future assembly. Sides of the carport are lifted from corner angles and base supports. The door in one side are going to be looked and not dismantled. Only the handle is to be taken out.
- f) Assembly of the carport into transport position is done by folding dismantled parts as follows: (see pict.no. 6, 7 and 8).
  - \* a side/wall (inside down) onto the floor,
  - \* the other side/wall (inside down) onto the first one. Bearer supports are put together and secured with securing support I, as shown on the picture no. 7,
  - \* back wall onto the side/walls,
  - \* door onto the back wall,
  - \* the whole is fixed by tape,
  - \* roof onto the door,
  - \* secure the carport with the corner angles. Make sure that two corner angles with pegs are placed on the corners of the carport (crossways) as shown on the picture no. 8. Corner angles should be screwed to the roof, with the help of securing support II, fasten together with bolts M 12 x 30 to the opposite angles and screwed to base/floor as shown on the picture no. 6.

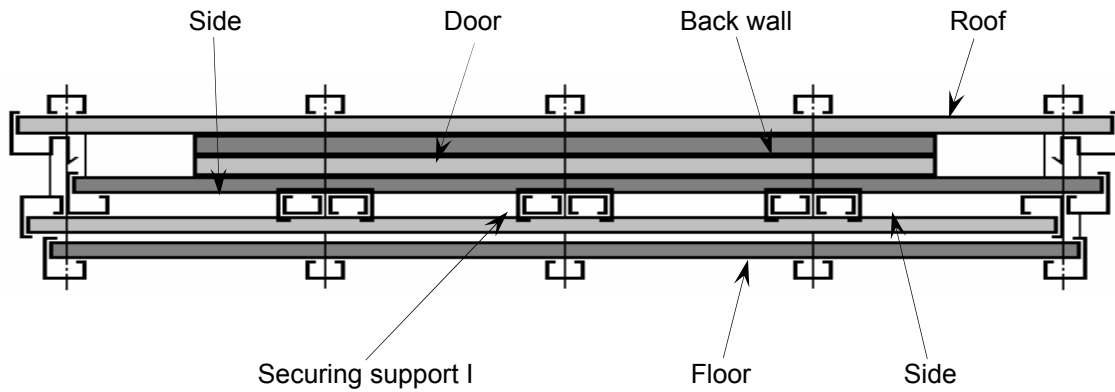


**Picture no. 6.**



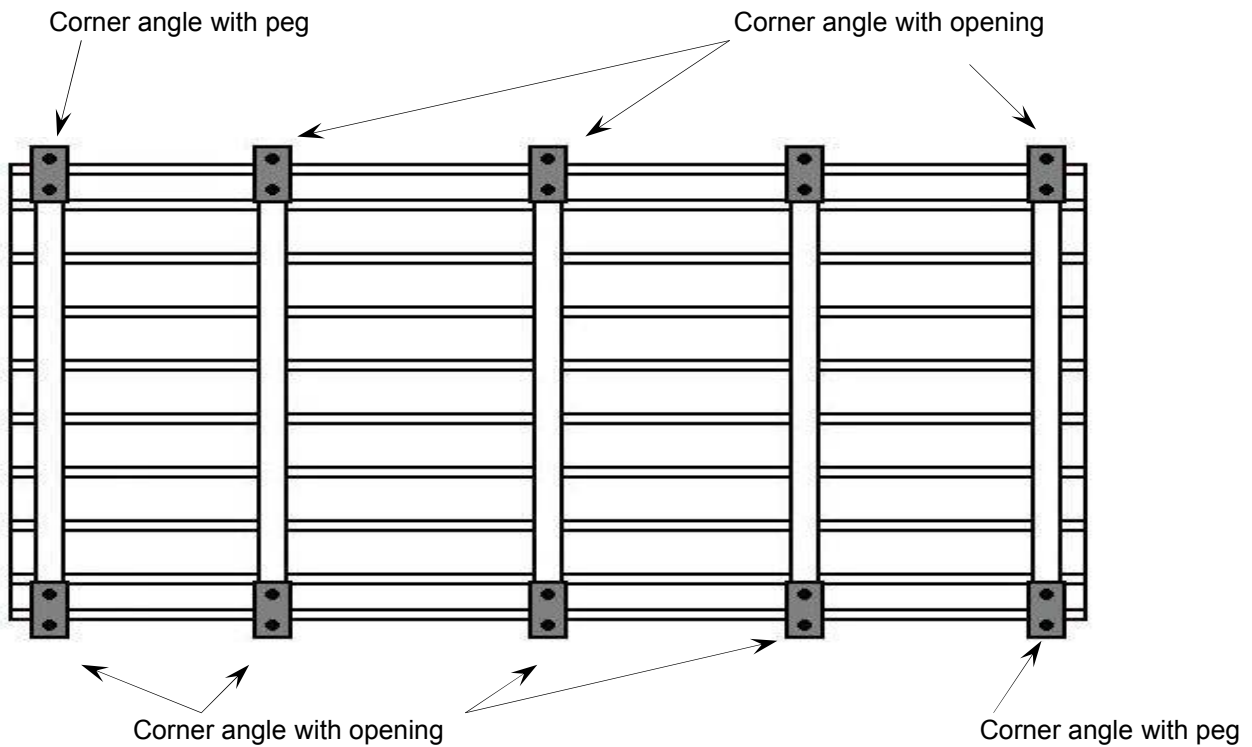
**KOVOBEL CARPORT**

**VERTICAL CROSS-SECTION OF CARPORT IN TRANSPORT POSITION**



**Picture no. 7. Longitudinal section of the carport in transportation position**

**TOP VIEW ON CARPORT IN TRANSPORT POSITION**



**Picture no. 8.: Top view on the carport in transportat positron**

Tools needed for dismantle - ratchet spanner 19, open spanner 19, hammer, safety support I, safety support II, tongs for dismantle nails, safety nuts M12, four bolts M 12 x 12,5, which were replaced in as sembly with M 12 x 70.



## 10) GUARANTEE, SERVICE AND SPARE PARTS

For ordering of spare parts, the Catalogue of spare parts should be used.

Responsibility for defects and Guarantee is followed in accordance with regulations of commercial and civil law.

The producer gives a 12-month-guarantee.

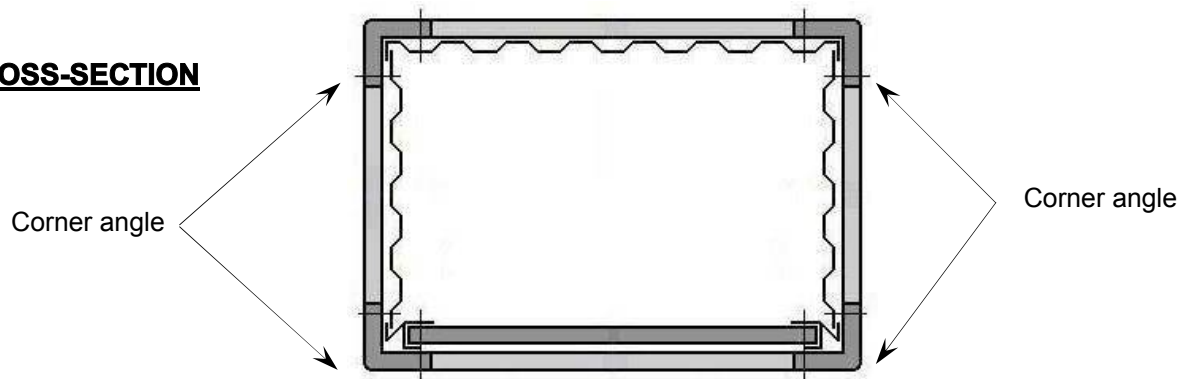
Any repairs during the guarantee period as well as after it must be carried out by the producer.

Spare parts will be delivered by manufacturer after proper order, where following points are stated:

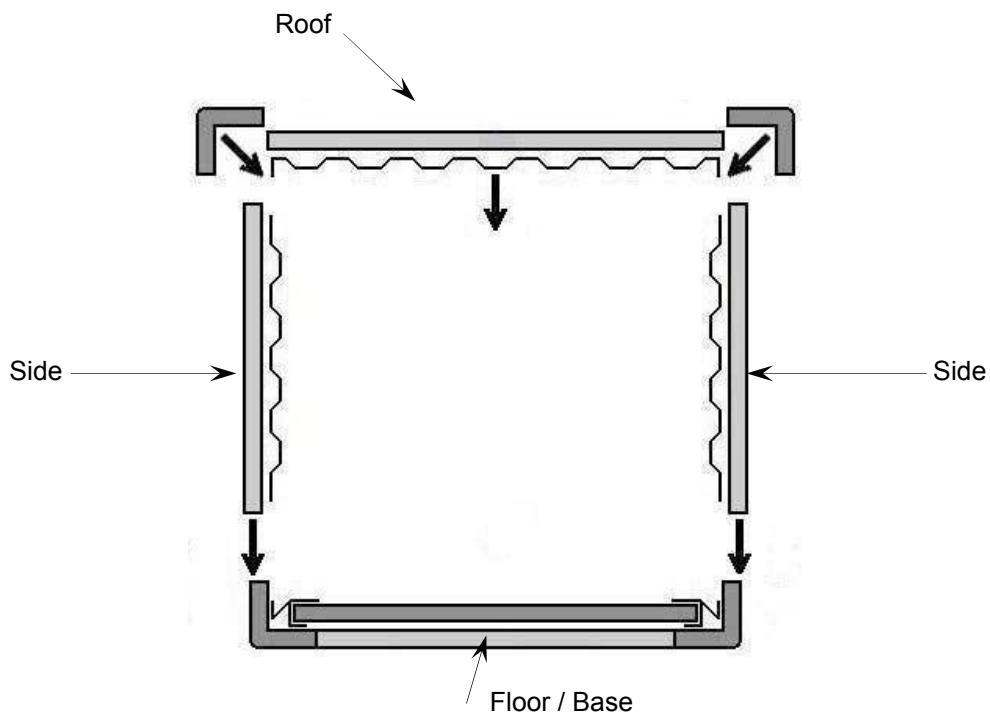
- \* name and address of the purchaser,
- \* information for correspondence and banking contact,
- \* length of carport Kovobel,
- \* accurate description of the parts wanted as stated in the Catalogue,
- \* number of parts and term of delivery
- \* way of shipment.

## 11) FIGURES

### MID CROSS-SECTION



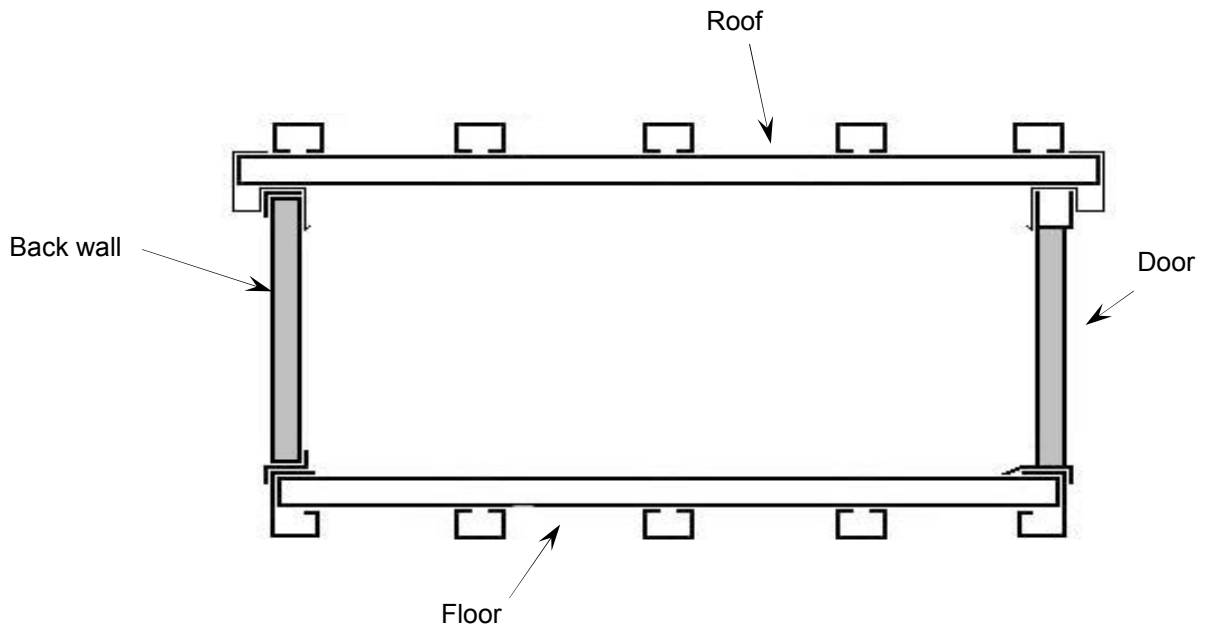
**Picture no. 9.**



**Picture no. 10.**

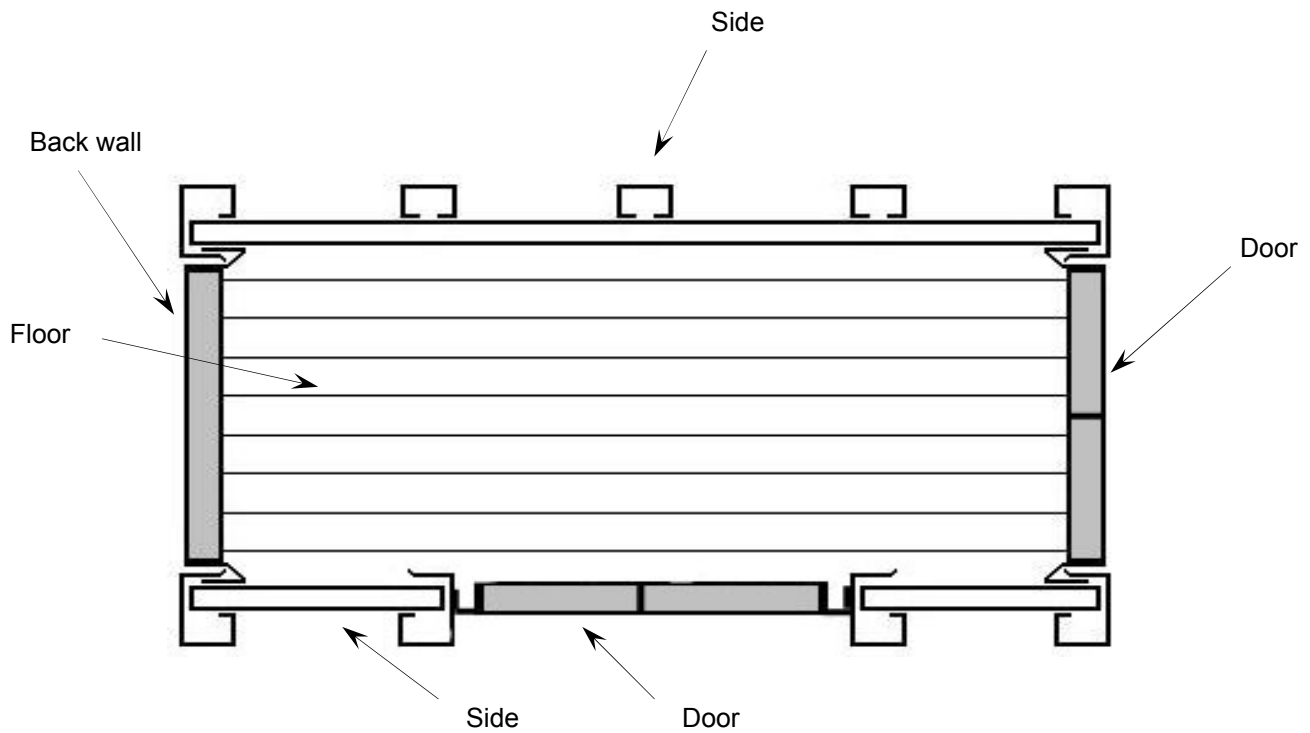
# KOVOBEL CARPORT

## VERTICAL CROSS-SECTION

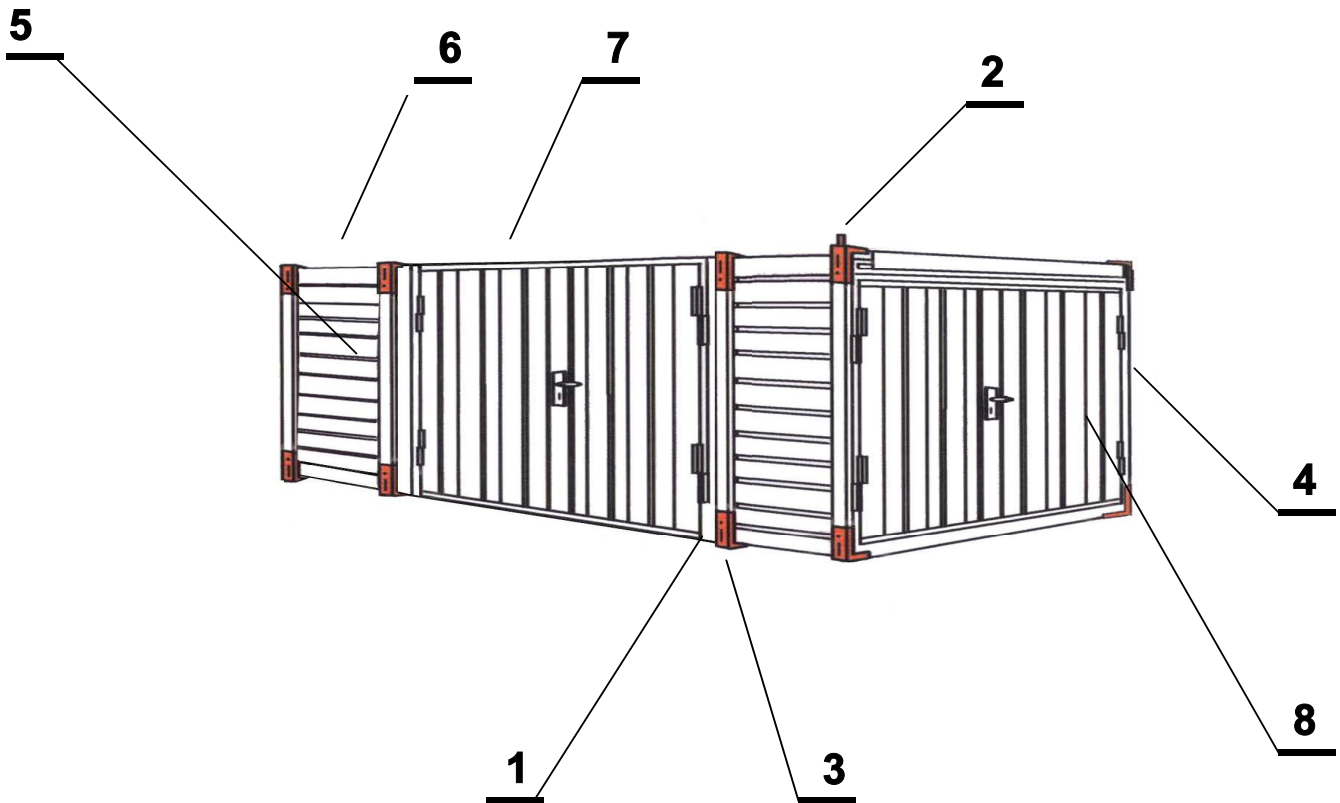


**Picture no. 11.**

## HORIZONTAL CROSS-SECTION



**Picture no. 12.**

**KOVOBEL CARPORT**
**12. SPARE PARTS CATALOGUE**

**CARPORT 5m LONG**

POS.	NAME OF THE PART	CATALOGUE NUMBER	NUMBER OF PARTS PER 1 CONTAINER
1	Floor	02148	1
2	corner angle with peg	01953	2
3	corner angle with opening	01952	18
4	side/wall	02140	1
5	side/wall with door	02371	1
6	back wall	01932	1
7	Roof	02142	1
8	double-wing door with frame	01925	1

**CARPORT 6m LONG**

POS.	NAME OF THE PART	CATALOGUE NUMBER	NUMBER OF PARTS PER 1 CONTAINER
1	Floor	02149	1
2	corner angle with peg	01953	2
3	corner angle with opening	01952	18
4	side/wall	02144	1
5	side/wall with door	02427	1
6	back wall	01932	1
7	Roof	02143	1
8	double-wing door with frame	01925	1



**KOVOBEL CARPORT**

---